

Chute Magnet

High Intensity – Rare Earth



Fig. A

The Eclipse Magnetics high intensity magnetic Chute Magnet has been designed to operate in arduous conditions and where contamination size is relatively large e.g. nuts, bolts etc.

The unit has two hinged, high intensity magnetic packs, which are secured to a housing by an adjustable hinge arrangement and tri-cone locking nut. These tri-cone nuts ensure even pressure is generated around the food grade silicon seal.

The chute magnet can be incorporated into any form of vertical or angled pipe or chute section. A common installation location is raw material inlet points for products such as grain, rice, corn, bran and animal feed etc.

A central diverter is mounted on the inlet. This directs processed product onto the magnetic face ensuring a high contamination removal rate.

All dry powders and granular type materials can be processed through the unit.

Electrical safety interlocks can be fitted to the magnetic packs to stop the process should they be accidentally opened.

Cleaning

The Eclipse Magnetics Chute Magnet benefits use the Eclipse Magnetics 'Easy Clean' system (Fig. A).

Simply release the quick-release toggle clamps, swing the packs away from the line and hinge the easy clean plates away. The collected contamination will be free from magnetic attraction and can be simply and easily removed allowing for inspection or further analysis.

Suitable Products

Dry powders and granulates.

Suitable Locations

Inlet / outlet points.

Benefits

- Easy to clean
- Maintains full flow
- High collection capacity
- Reduces 'spark' risk
- Removes 'tramp' sized contaminants
- Meet audit requirements
- Rare earth deep magnetic field

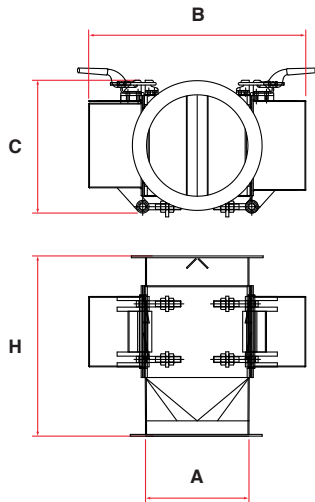
Category

Primary protection - tramp.

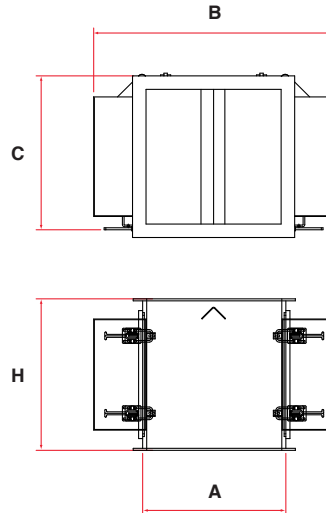


Technical Data

Round



Square



Product Information

Part Number	Inlet / Outlet A mm	B mm	C mm	H mm	Weight kg
Round					
CMN150	150	300	250	270	24
CMN200	200	350	300	270	32
CNM250	250	400	360	370	42
CMN300	300	450	420	370	56
Square					
CMN1515	150	280	240	220	22
CMN2020	200	330	280	220	30
CMN2525	250	380	350	300	39
CMN3030	300	430	400	320	52

Performance

Magnetic performance
Performance Reading
Magnetic material

3,500 Gauss
 On magnetic pack surface
 Rare earth neodymium iron boron

Magnet grade

N35 – Inspected and confirmed via hysteresis graph prior to use

Temperature
Pressure

-20°C / +60°C
 + / - 0.2 Bar

Materials

Housing
Other Parts
Surface finish

316 grade stainless steel
 316 grade stainless steel
 Brushed internally / externally to 1.2µm
 Self adhered white foam
 Mild steel – bright zinc plated

Sealing
Toggle Clamps

Options

- Stainless steel toggle clamps
- High temperature samarium cobalt magnetic material, +250°C
- Overpressure to + / - 5 Bar
- Sizes up to 500mm Ø or square
- 304 grade stainless steel
- Pharmaceutical specification
- ATEX certified
- Flanged to suit
- Safety relay switches
- Metal detectable silicon rubber seal – dark blue, FDA approved
- Ceramic magnetic material

If you have any more questions, require technical assistance or would like a quotation, please contact us.

www.eclipsemagnetics.com

Eclipse Magnetics Ltd, Atlas Way, Sheffield, S4 7QQ, England

T +44 (0)114 225 0600 F +44 (0)114 225 0610 E info@eclipsemagnetics.com W www.eclipsemagnetics.com

While every effort has been made to ensure the accuracy of the information in this publication please note that specifications may change without notice.

